

HIGH PRESSURE WIRE HOSES WITH PA11 CORE TUBE

1/4" 10,000 psi High pressure wire hose

2340N-04V91



C

CONSTRUCTION

Core tubeMethanol washed PA11
 Pressure reinforcementHigh strength wire

CoverPA12
 ColourBlack

TEMPERATURE RANGE

-40°C up to +100°C, max. 70°C for water or methanol based fluids.
 -40°F up to +212°F, max. 158°F for water or methanol based fluids.

MAX. LENGTH

5,000 m / 16,404 ft
 (for longer length requirements please contact Parker Hannifin)

SPECIFICATION

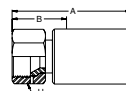
Meets or exceeds performance requirements of ISO 13628-5 / API 17E

2340N-04V91

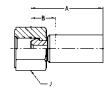
												Collapse pressure		DF
mm	inch	mm	inch	MPa	psi	MPa	psi	mm	inch	kg/m	lbs/ft	MPa	psi	
6.4	1/4	12.5	0.490	69	10,000	276.0	40,000	70	2.8	0.23	0.15	15.4	2,234	4.0

JIC female swivel**Material: AISI 316 / 316Ti**

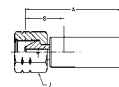
#		A		B				
		mm	inch	mm	inch	mm	MPa	psi
1068X-4-04C	7/16 - 20 UNF	57.0	2.6	26.0	1.0	19	69.0	10,000
1068X-6-04C	9/16 - 18 UNF	55.0	2.6	24.0	1.0	19	103.5	15,000

**BSP female swivel (60° cone)****Material: AISI 316 / 316Ti**

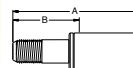
#		A		B				
		mm	inch	mm	inch	mm	MPa	psi
1928X-4-04C	G 1/4	56.0	2.6	25.0	1.0	19	80.0	11,600

**Type M female swivel****Material: AISI 316 / 316Ti**

#		A		B				
		mm	inch	mm	inch	mm	MPa	psi
1A18X-6-04C	9/16 - 18 UNF	66.0	2.6	33.0	1.30	19	103.5	15,000

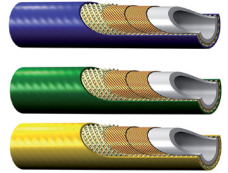
**Medium pressure tube nipple****Material: AISI 316 / 316Ti**

#		A		B			
		mm	inch	mm	inch	MPa	psi
1Y28X-6-04C	3/8 - 24 UNF - LH	120.0	4.72	87.0	3.43	138.0	20,000



HIGH PRESSURE SUBSEA BOP HOSES

**1.5" 5,000 psi Subsea BOP hose
2340N-24V10**



CONSTRUCTION

Core tube Polyamide
Pressure reinforcement High strength wire

Cover Polyurethane
Colour V10: black; V12: blue; V13: green; V16: yellow

TEMPERATURE RANGE

-40°C up to +100°C, max. 70°C for water or methanol based fluids.

2340N-24V10

⊙		⊙		⊙		⊙		⊙		⊙		Collapse pressure		DF
mm	inch	mm	inch	MPa	psi	MPa	psi	mm	inch	kg/m	lbs/ft	MPa	psi	
38	1.5	55.5	2.185	34.5	5,000	138.0	20,000	450	17.7	3.5	2.35	3.7	536	4.0

JIC female swivel

#	⊙	A		B		H	J	⊙	
		mm	inch	mm	inch	mm	mm	MPa	psi
1068X-24-24C	1 7/8-12 UN	173.0	6.817	89.2	3.51	65	55	345.0	5,000

