

HOSE SPECIFICATIONS

2" 10,000 psi *Black Eagle* 2580N-32V80



CONSTRUCTION

Core tubePA11
Pressure reinforcement6 layers of high tensile steel wire

CoverExtra thick dual layer TPU sheath
ColourColorGard™ – red inner sheath and black outer sheath

TEMPERATURE RANGE

-40°C up to +70°C
-40°F up to +158°F

MAX. LENGTH

1,400 m / 4,593 ft

CERTIFICATES

DNVGL Type Approval TAD00000CA (see chapter 4)
ABS Product Design Assessment (PDA) Certificate 18-HS1748809-PDA

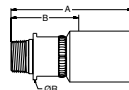
2580N-32V80

| Ø | | Ø | | Max. working pressure | | Test pressure | | Min. bend radius | | Weight | | Collapse pressure | | | |
|------|------|------|-------|-----------------------|--------|---------------|--------|------------------|--------|--------|--------|-------------------|------|-----|-----|
| mm | inch | mm | inch | MPa | psi | MPa | psi | mm | inch | kg/m | lbs/ft | MPa | psi | | |
| 50.5 | 2 | 84.5 | 3.330 | 69 | 10,000 | 103.5 | 15,000 | 172.5 | 25,000 | 800 | 31.5 | 9.4 | 6.32 | 5.7 | 825 |

National Pipe Tapered (NPT) male

Material: Special Steel and Stainless Steel Materials

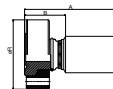
| # | NPT | A | | B | | ØR | | Ø | |
|----------------|--------|-------|------|-------|------|------|------|------|-------|
| | | mm | inch | mm | inch | mm | inch | MPa | psi |
| 101BL-32-32 | 2" NPT | 275.0 | 10.8 | 129.0 | 5.08 | 83.0 | 3.27 | 34.5 | 5,000 |
| 6015X-32-32-TC | 2" NPT | 244.0 | 9.61 | 107.0 | 4.22 | 82.5 | 3.25 | 34.5 | 5,000 |



API Flange, swivel

Material: Special Steel and Stainless Steel Materials

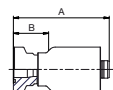
| # | API size | A | | B | | ØR | | Seal | Ø | |
|--------------------------|---------------------|-------|-------|-------|------|-------|------|-------|------|--------|
| | | mm | inch | mm | inch | mm | inch | | MPa | psi |
| 18KBL-33-32-API17DSV-10K | 2 1/16" 10,000 psi | 275.0 | 10.83 | 129.0 | 5.08 | 210.0 | 8.27 | BX152 | 69.0 | 10,000 |
| 68K5X-29-32-API17DSV | 1 13/16" 10,000 psi | 250.0 | 9.84 | 113.2 | 4.46 | 185.0 | 7.28 | BX151 | 69.0 | 10,000 |



API Hub

Material: Special Steel and Stainless Steel Materials

| # | API size | A | | B | | Seal | Ø | |
|---------------------|---------------------|-------|------|-------|------|-------|------|--------|
| | | mm | inch | mm | inch | | MPa | psi |
| 1HBBL-29-32-10K | 1 13/16" 10,000 psi | 275.0 | 10.8 | 129.0 | 5.08 | BX151 | 69.0 | 10,000 |
| 1HBBL-33-32-10K-L * | 2 1/16" 10,000 psi | 280.0 | 11 | 134.0 | 5.28 | BX152 | 69.0 | 10,000 |



* with Inconel inlay