

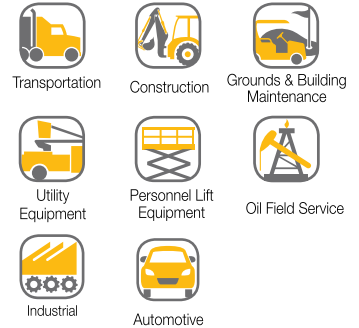
881PM / SAE 100R4



Hydraulic
Suction and Return line

| # Part Number | Hose I.D | | Hose O.D mm | Working Pressure | | Minimum Bend Radius | | Approx. Weight | |
|------------------|----------|------|----------------|------------------|-----|---------------------|-----|----------------|------|
| | inch | mm | | psi | bar | inch | mm | lbs/ft | kg/m |
| 881PM-12PM | 3/4 | 19.0 | 29.0 | 305 | 21 | 1.6 | 40 | 0.32 | 0.49 |
| 881PM-16PM | 1 | 25.4 | 35.0 | 250 | 17 | 2.2 | 55 | 0.42 | 0.62 |
| 881PM-20PM | 1-1/4 | 31.8 | 42.0 | 205 | 14 | 2.8 | 70 | 0.53 | 0.79 |
| 881PM-24PM | 1-1/2 | 38.0 | 50.0 | 145 | 10 | 3.2 | 80 | 0.75 | 1.12 |
| 881PM-32PM | 2 | 50.8 | 62.0 | 145 | 10 | 3.9 | 100 | 0.89 | 1.33 |
| 881PM-40PM | 2-1/2 | 63.5 | 75.0 | 145 | 10 | 6.7 | 170 | 1.21 | 1.80 |
| 881PM-48PM | 3 | 76.2 | 88.0 | 145 | 10 | 8.9 | 225 | 1.45 | 2.15 |

Markets



Application:

Recommended for hydraulic return lines / suction lines.

Construction:

Inner tube : NBR - Synthetic rubber
 Reinforcement : Multiple layers of fibre braids and one helical wire
 Outer Cover : CR-Synthetic rubber

Temp. Range

- 40°C to +100°C
 (-40°F to +212°F)

Type Approvals: ABS

EN 854 R6 / SAE 100R6



Hydraulic

| # Part Number | Hose I.D | | Hose O.D mm | Working Pressure | | Minimum Bend Radius | | Approx. Weight | |
|------------------|----------|------|----------------|------------------|-----|---------------------|-----|----------------|------|
| | inch | mm | | psi | bar | inch | mm | lbs/ft | kg/m |
| SAE100R6PM-4PM | 1/4 | 6.4 | 12.7 | 400 | 28 | 2.5 | 65 | 0.09 | 0.13 |
| SAE100R6PM-5PM | 5/16 | 7.9 | 14.3 | 400 | 28 | 3.0 | 75 | 0.11 | 0.16 |
| SAE100R6PM-6PM | 3/8 | 9.5 | 15.9 | 400 | 28 | 3.0 | 75 | 0.12 | 0.18 |
| SAE100R6PM-8PM | 1/2 | 12.7 | 19.8 | 400 | 28 | 3.9 | 100 | 0.17 | 0.25 |
| SAE100R6PM-10PM | 5/8 | 15.9 | 23.0 | 350 | 24 | 4.9 | 125 | 0.20 | 0.30 |
| SAE100R6PM-12PM | 3/4 | 19.0 | 26.6 | 300 | 21 | 5.9 | 150 | 0.23 | 0.34 |
| *SAE100R6PM-16PM | 1 | 25.4 | 32.5 | 190 | 13 | 9.1 | 230 | 0.31 | 0.46 |

* Proprietary

Markets



Application:

Recommended for hydraulic low pressure lines, return lines & drain lines.

Construction:

Inner tube : NBR- Synthetic rubber
 Reinforcement : One synthetic textile braid
 Outer Cover : SBR- Synthetic rubber

Temp. Range

- 40°C to +100°C
 (-40°F to +212°F)

